

# 2018 Faculty Advising Workshop

## Part 2

Gary Malakoff, MD, FACP

Mukta Panda, MD, MACP, FRCP-London

Pamela Scott, C-TAGME

# QUIZ



# ERAS v. NRMP

- A. These are the same
- B. These are different
- C. Students need only apply to one or the other
- D. These are components of the Match
- E. ERAS has four components including LorP

# ERAS and NRMP

- **These are separate services offered by two different organizations, and each requires its own registration**
- **FAQ's:**
  - *I have already registered with ERAS; do I still need to register with NRMP? YES*
  - *Am I required to have an NRMP ID to submit with my ERAS application? NO*

# When should I take my Step 2 exams?

- A. Anytime before graduation
- B. Third year just to get it over with
- C. During internship
- D. Early in the 4<sup>th</sup> year **before** November 1

What do I do with my letter of recommendation once it is written?

- A. Fax it to each program the student is applying to
- B. Send it to Memphis
- C. Give it back to the student to edit
- D. Upload it to ERAS through the LorP



## 2019 Main Residency Match® Calendar

### 2018

**SEP  
15** Registration opens at 12:00 p.m. ET

---

**NOV  
30** Applicant standard registration deadline at 11:59 p.m. ET. After November 30, applicants incur a \$50 late fee in addition to the standard registration fee

---

### 2019

**JAN  
15** Rank order list entry opens at 12:00 p.m. ET

---

**JAN  
31** Program quota change, program withdrawal, and program SOAP participation deadlines at 11:59 p.m. ET

---

**FEB  
20** Rank Order List Certification Deadline at 9:00 p.m. ET

- Applicant late registration and Match withdrawal deadline
- Medical school student/graduate graduation credentials verification deadline
- Institution change approvals deadline
- Program reversion deadline

---

**MAR  
11** **Match Week**  
Supplemental Offer and Acceptance Program (SOAP) begins at 11:00 a.m. ET

---

**MAR  
14** SOAP concludes at 11:00 a.m. ET

---

**MAR  
15** **Match Day!**

- Medical school Match Day ceremonies at 12:00 p.m. ET
- Match results posted in the R3 system at 1:00 p.m. ET

# Interview Season



# Interviews

## Timing

- Most between October and January
- Students will not be able to go for all interviews

## Match etiquette and professionalism

- Expense/travel/time away from school

## Post Interview Communication and “Thank you” notes

# Interviews

## Anxiety

What if I don't get invited for an interview?

## Reality

- How will I pay for all of this travel?

## Second visits?

## The GRAPEVINE!

- (extremely powerful “media” amongst students on the interview trail)

# Surgery PD

- Why do you want to be a surgeon?
- How do you know you have what it takes to be a surgeon?
- What do you like most about our program?
- If for some reason you couldn't be a surgeon, what else would you do?
- Describe your ideal practice after residency.

# Family Medicine PD

- What about our program interested you?
- What type of hospitals did you rotate at? Academic Centers, Community Hospitals, etc follow up: what were you responsible for... i.e. shadowing or seeing patients independently with oversight
- What procedures were you exposed to? i.e. OB deliveries, suturing, gyn procedures, paracentesis, central lines, etc.
- Who influenced you the most in regards to your specialty decision and why?
- Describe your perfect residency?
- What are your plans post residency?
-

# Emergency Medicine Chair and PD

- Why are you going into Emergency Medicine?
- What are you looking for in an EM Residency Program?
- What are your future plans? Where do you expect to be in 10 years from now?
- Tell me about a mistake you made or a patient's care that did not go well – and tell me what you learned from the case?
- Dr. Mendiratta
- How do you learn best?
- What was the most challenging part of your training? Why?
- Why EM?
- What are your wellness habits?
- What kind of program do you need to succeed?
- 
-

# More:

- Tell me about yourself
- Tell me about a recent case you had which went well and one that did not
- Tell me about the research/meeting presentation/posters you have listed in your CV; know your own research
- Do you have any questions about our program?
- What are your weaknesses and your strengths?

# And More:

- Social media footprint
- Thank you notes
  - Send a note to those who interviewed you and the PD to reaffirm your interest in the program
- Second look
  - What if you cannot take advantage of this?

# Match Etiquette

*It is a breach of Match Agreement if:*

- A program requests an applicant to reveal specifics of where they are applying
- A program to request an applicant to reveal ranking preferences
- A program/applicant to suggest or inform an applicant that placement on a rank order list is contingent upon submission of a verbal or written statement indicating the program/applicant's preference



# Rank List

- Where to start?
- The Match favors the student
- Don't try to outwit the Match
- No interview → no rank
- Make sure the student is happy with ALL rank list entries (there is a finite chance that the student could Match with the last program on the rank list)
- \*\*ONLY rank programs in the specific order of your true preference
- \*\*DO NOT rank programs you do not want to consider

# Rank List: more

- How long should my rank list be?
  - Length depends on multiple factors:
    - Your competitiveness and the competitiveness of the programs to which you are applying
    - The types of programs to which you are applying (academic vs. community-based vs. rural)
    - Rank list not too short and not too long
    - “Safety” programs?
      - Would I be better off unmatched and enter the SOAP?

Rank lists: more

PLAN:



# What is Plan B?

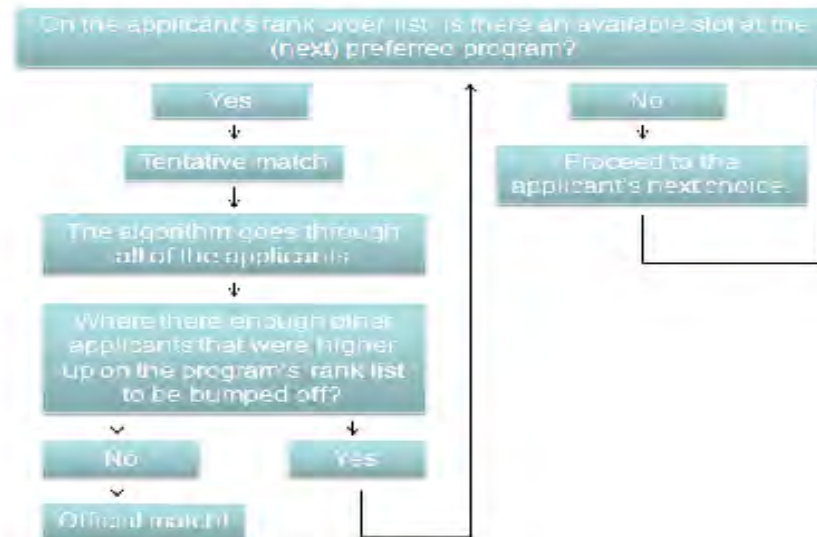
- A. Match protection
- B. All students need a plan b
- C. Only surgery students need a plan b
- D. “I won’t need plan b; I’ll just enter the SOAP”



## Medical MasterMind Community

*"Mentoring the next generation of physicians."*

### How the NRMP Match Day Algorithm Works



Listen to the full Audio Podcast explanation here:

<http://medical-mastermind-community.com/blog/how-the-nrmp-match-day-algorithm-works>



# M3 → M4 students seek advice about:

- Academic schedules (January)
  - When do I do my JI?
  - Should I do an away rotation?
  - When should I take Step 2 CK/CS?
- Career interests
- Research advice
- HONEST advising





## 2019 Main Residency Match® Calendar

### 2018

SEP  
15 Registration opens at 12:00 p.m. ET

---

NOV  
30 Applicant standard registration deadline at 11:59 p.m. ET. After November 30, applicants incur a \$50 late fee in addition to the standard registration fee

---

### 2019

JAN  
15 Rank order list entry opens at 12:00 p.m. ET

---

JAN  
31 Program quota change, program withdrawal, and program SOAP participation deadlines at 11:59 p.m. ET

---

FEB  
20 Rank Order List Certification Deadline at 9:00 p.m. ET

- Applicant late registration and Match withdrawal deadline
- Medical school student/graduate graduation credentials verification deadline
- Institution change approvals deadline
- Program reversion deadline

---

MAR  
11 **Match Week**  
Supplemental Offer and Acceptance Program (SOAP) begins at 11:00 a.m. ET

---

MAR  
14 SOAP concludes at 11:00 a.m. ET

---

MAR  
15 **Match Day!**

- Medical school Match Day ceremonies at 12:00 p.m. ET
- Match results posted in the R3 system at 1:00 p.m. ET

# Couples Matching



# Couples Matching

- Any two applicants who wish to be matched as a couple can link their rank order lists in the Match
- EACH partner of the couple must enroll individually in the Match and indicate in the R3 system that they want to participate as a couple

# Couples Matching

- The couple will match to the most preferred pair of programs on the rank order lists where each partner has been offered a position
- If applicants do not obtain a match as a couple, the algorithm does NOT process their lists separately to find possible match for each individual

# Couples Matching

- The Match algorithm considers only a couple's primary rank order lists when attempting to find a match and does NOT consider a couple's supplemental rank order as a unit
- There are additional Match fees for each member of a couple which are nonrefundable even if the applicants decide to uncouple

# Creating Rank Order Lists as a Couple

- The partners must have the same number of ranks
- Each program ranked by one partner must be paired with an active program and or with an indication of “No Match” by the other partner
- Using the “No Match” option means that one partner is willing to be unmatched if the other partner matches to a position in the program designated at that rank

# Rank Order Lists

- A program can be ranked more than once on a partner's rank order list provided the corresponding rank on the other partner's list is different
- Rank order lists should NOT be certified at the same exact moments (the system must check the second partner's list for duplicate pairing)
- Couple's rank order lists should be "certified" well before the ROL deadline

# Uncoupling

- If a couple chooses to participate in the Match as individuals or if one partner wants to withdraw from the Match, BOTH first must uncouple in the R3 system
- Once uncoupled, each remaining partner must adjust their rank order list by removing duplication programs and re-certifying it before the ROL deadline



# 2018 Couples Match Data\*\*

- Number of couples: 1,165\* (2,330 individuals)
- Number of couples who matched (both individuals): 1116\*
- Number of couples who didn't match: 27
- This means that the Couple Match rate was 95.8%\*

\* Indicates the highest on record

\*\*Numbers do not include SOAP results.

# When to inform programs that you are couple's matching?

- Personal Statement
- When scheduling an interview
- During an interview
- In the “thank you” or follow up notes
- Students are NOT required to tell programs they are couples matching

# Military Match



# Military Match

- Military Match is much earlier than the civilian match
- Applications are submitted in September of the M4 year
- Interviews completed by November
- Away rotations **MUST** be done before then to be helpful
- The Joint Service GME Selection Board ranks and “matches” everyone

# Military Match

- If a student has a military obligation, he/she must apply to the Military Match and the civilian match (ERAS)
- 3 outcomes:
  - A military residency is obtained
  - A civilian residency is obtained with military deferment
  - A military transitional internship is obtained

# Military Match

- If the student is selected for a military residency, he/she will serve as an active duty physician
- Time in residency does NOT count towards any service commitment
- Student will be withdrawn from the civilian match (ERAS) if he/she matches in the military
- Civilian interviews should be done in late December/January
- The JSGMESB uses a structured point system to rank all applicants

# Military Match

- The JSGMESB uses a structured point system to rank all applicants
  - Success in med school (class rank, etc)
  - Suitability (letters of recommendation, clerkship evaluations)
  - Prior military service
  - Research

# What if I don't match?

- Military medical students who do not match in their chosen field may reapply the next year during their internship
- Consider switching into a military residency in another field if available
- Do a one year civilian or military internship (Transitional PGY-1 year)
- Afterwards, the student may:
  - Reapply to a residency
  - Serves as a General Medical Officer (GMO) which fulfills active duty service obligation



# REFERENCES: Couples Match

- <http://www.nrmp.org/couples-in-the-match/>
- <http://www.nrmp.org/couples-match-videos/>
- [https://mk0nrmpcikgb8jxyd19h.kinstacdn.com/wp-content/uploads/2017/06/Applicant\\_Coupling-App.pdf](https://mk0nrmpcikgb8jxyd19h.kinstacdn.com/wp-content/uploads/2017/06/Applicant_Coupling-App.pdf)

# References: Military Match

- <http://medicineandthemilitary.com/officer-and-medical-training/residency-and-match-day>
- <http://medicineandthemilitary.com/officer-and-medical-training/medical-school-timeline>
- <http://www.gsacep.org/aws/GSACE/pt/sp/students>
- <https://www.emra.org/students/Military/?terms=military%20match>
- <http://www.amsus.org>